

Creative Water Guard

Polymer Modified Highly Flexible Cementitious Waterproofing Membrane

DESCRIPTION

Creative Water Guard is a polymer modified, highly flexible, cementitious, liquid applied environment friendly two component waterproof membrane for protection of concrete and mortar. It provides excellent adhesion, flexibility, crack bridging ability and durability.

SCOPE OF USE

Creative Water Guard can be applied to various cementitious surface in swimming pools, basement waterproofing, bathrooms, wet area waterproofing, roof & roof garden waterproofing, water tanks etc.



TYPICAL PROPERTIES AT 25°C

PROPERTY	TEST METHOD	VALUE
Component		Two parts; Part A-Powder & Part B: Liquid
Mixed Form		Slurry
Colour		Grey
Mixed Density	BSEN 12350-6	1.50 kg/ltr +/- 0.05
Toxicity	BS 6920-1	Non-Toxic
Working Time		30 mins
Setting Time		3 hrs
Water Absorption	BS 1881-5	> 95% reduction over control
Bond Strength	ASTM D4541	1 N/mm ²
Water Permeability (at 7 bar pressure)	BS 12390-8	Nil
Crack Bridge Ability	ASTM C1305	No Crack at 2mm width
Tensile Strength	ASTM D412	1 N/mm ²
Elongation	ASTM D412	> 100% (un-bonded)
Shore A Hardness	ASTM D2240	> 70
Tear Resistance	ASTM D 1004	10 N/mm

SURFACE PREPARATION

The surface should be clean and sound, free of dust loose particles, grease, oil, primers from previous membrane systems or bitumen. Bitumen or primer

should be removed by shotblasting or mechanical means. Spalled concrete should be repaired by cutting out to sound concrete and patching with polymer modified repair material Creative Repair Mortar, Cracks, holes and honeycombs must be repaired prior to application.

KEY ADVANTAGES

- Crack bridging and sealing
- Excellent elongation and flexibility
- Can be used in contact with portable water
- Environment friendly and non-toxic in nature
- Excellent adhesion
- Can be applied on green concrete
- Excellent for damp-proofing
- Breathable coating
- Provides barrier to water borne salts & sulfur attacks
- Easy to apply



MIXING

Creative Water Guard is supplied in pre-measured units. Slowly add the powder to the liquid and mix using a slow speed drill machine fitted with a paddle, to a lump free smooth consistency. Do not add water or rework a stiffened mix by adding water. Mix appropriate quantity which can be used within 30-40 minutes.

APPLICATION

Saturate the concrete surface with clean water. Apply first coat while the surface is still damp but free from standing water. Apply using a short stiff bristle brush or rubber squeeze at a rate of 1-2 mm, depending on the expected water pressure. Required thickness is achieved by applying 2-3 layers, taking care that each layer is not thicker than 1 mm. Leave the first coat to dry for 2-3 hours before applying the second coat. Second coat can be rubbed down with a soft sponge. Spray or trowel application is acceptable, if the mixing ratio is adjusted to achieve the right consistency.

CURING

Creative Water Guard should be protected from wind, sunshine and rain until fully cured. Keep moist for 3-4 days after application.

GENERAL INFORMATION

Shelf Life	12 months from date of manufacture when stored under warehouse conditions in original unopened packing. Extreme temperature/humidity may reduce shelf life.
Cleaning	Clean all equipment and tools with water immediately after use.

PACK SIZE

20 KG set

NOTE

To improve the bonding between **Creative Water Guard** and the subsequent finishes such as repair mortars, screeds and tile adhesives, it is strongly recommended to use **Creative PloyBond-SBR** as bonding agent. Application should be wet on wet. Fiber mesh (80-120GSM) is recommended to be used for the areas exposed to foot traffic and also areas where coating is expected to undergo high pressure. In case of spray application, **Creative Water Guard** to be used; size of nozzle-8 mm.

COVERAGE

10 m²/coat/ set of 20 kg at ± 1 mm thickness.

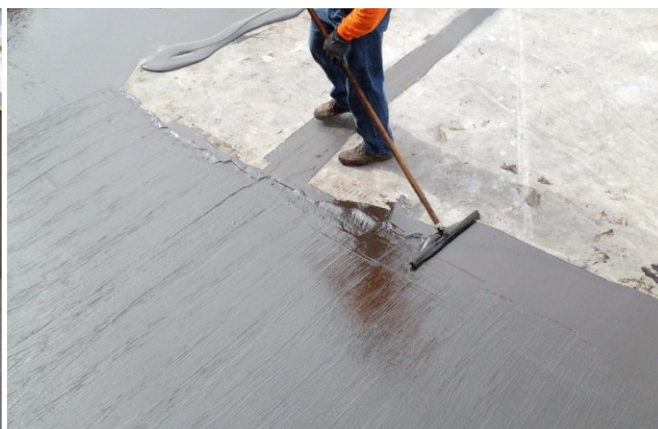
Actual coverage depends on porosity and texture of the substrate.

HEALTH AND SAFETY

PPE's	Gloves, goggles and suitable mask must be worn.
Precautions	Contact with skin, eyes etc. must be avoided. If swallowed seek medical attention immediately.
Hazard	Regarded as non-hazardous for transportation.
Disposal	Do not reuse containers. To be disposed off as per local rules and regulations.
Additional Information	Refer MSDS. (Available on request)

TECHNICAL SERVICE

Creative Chemical Company technical services are available on request for onsite support to assist in the correct use of this product.



Creative Chemical Vietnam Co. Ltd.

No-15, Street-10A, Bien Hoa Industrial Zone 1, Bien Hoa City, Dong Nai, Vietnam
Phone: (+84) 251 8877 400, (+84) 61 3836 125, Email: info@creativechemical.net, Web: creativechemical.net

Creative Chemical products are produced with ISO 9001:2015 standard terms and conditions. So it's customer responsibility to maintain and follow up the TDS and weather forecast carefully. We can not guarantee the application and end use as it depends on various conditions and weather.